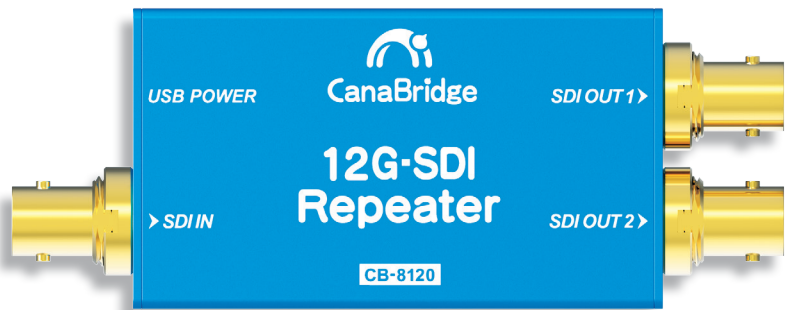


1 × 2 12G-SDI Signal Repeater

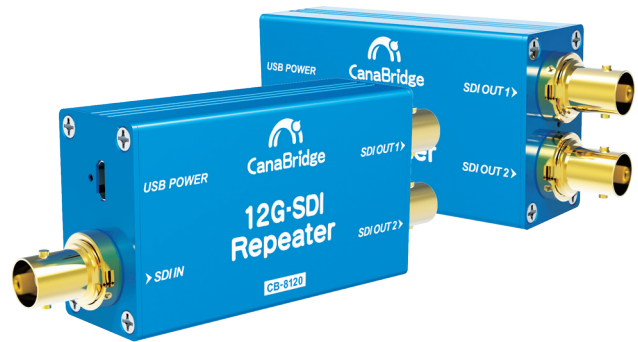
CB-8120

The CB-8120 is a miniature 1 × 2 12G-SDI repeater. The SD/HD/3G/6G/12G-SDI input signal is automatically detected. It features cable equalization and re-clocking. It also supports ASI signal on both output ports.



[Features]

- Input: 1 × 12G-SDI, Output: 2 × 12G-SDI
- Automatically detects SD, HD, 3G, 6G and 12G-SDI
- Support DVB-ASI signal
- Automatic cable equalization and signal retiming
- Pass all ancillary data and embedded audio
- 3.3-5.5V micro USB power
- Detachable bracket design for wall mounting



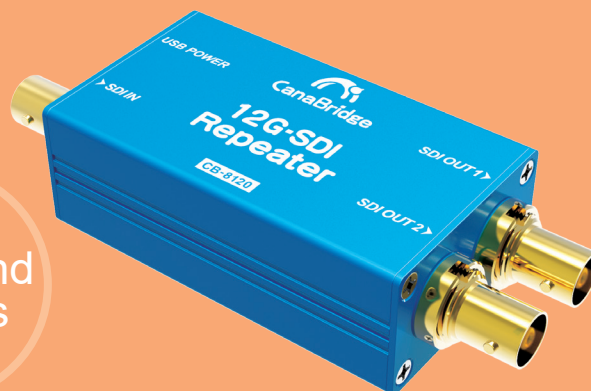
Widespread Application

Broadcast

Education

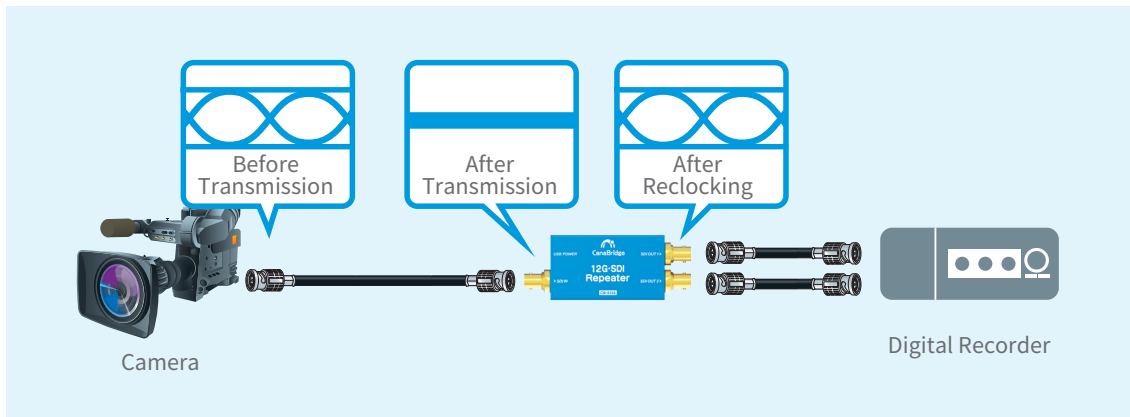
Command Centers

Conference

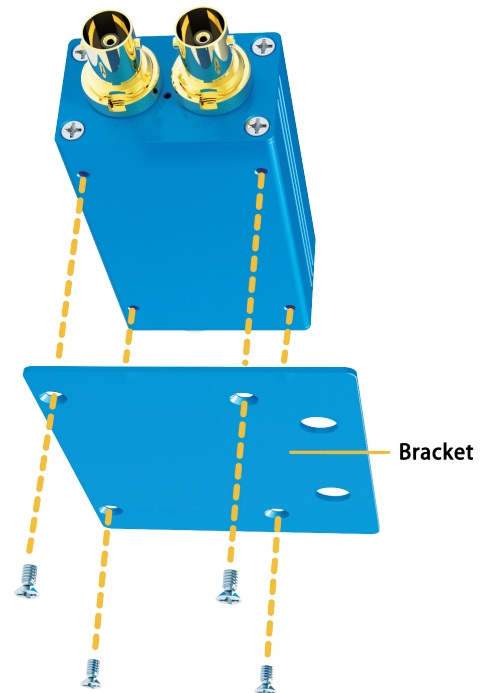
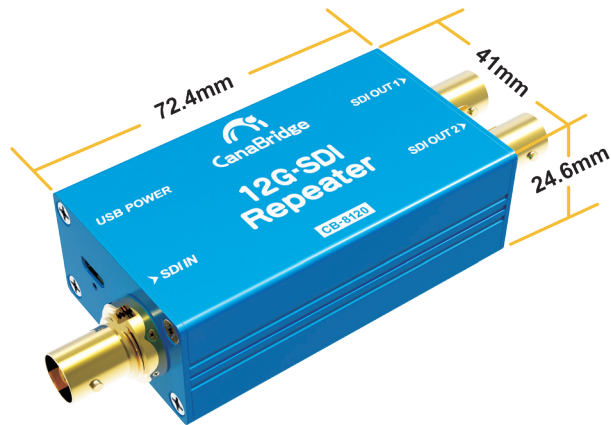
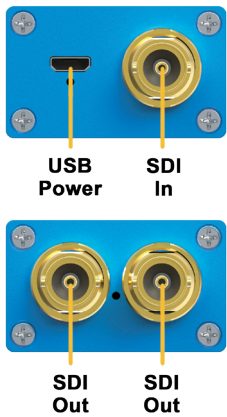


CB-8120 is ideal for use in broadcast and video production facilities, command and control centers, medical imaging facilities, and other applications.

[Typical application]



[More detail]



[Parameter]

Connections	SDI Video Input	1 × SD/HD/3G/6G/12G-SDI (75Ω BNC)
	SDI Video Output	2 × SD/HD/3G/6G/12G-SDI (75Ω BNC)
	Micro USB	Power
	Power LED	Power indicator
	SDI LED	SDI input signal indicator
Functions and Standards	SDI Video Rate	SD/HD/3G/6G/12G-SDI
	SDI Auto Switching	Automatically detects SD, HD, 3G, 6G and 12G-SDI
	SDI Standard	SMPTE ST 259, SMPTE ST 292-1, SMPTE ST 424, SMPTE ST-2081-1, SMPTE ST-2082-2, DVB-ASI

Power	Power	Micro USB
	Voltage Range	USB 3.3-5.5V
	Power Consumption	1.0W (Max)
Physical Specifications	Dimension	72.4 × 41 × 24.6mm
	Net Weight	110g
	Gross Weight	470g
Environmental Specifications	Operating Temperature	0 ~60 deg C
	Storage Temperature	-30~70 deg C
	Relative Humidity	0%~90% non-condensing

*Information in this document is subject to change without notice.

